

## GQCCC 40th Anniversary BOM

The GQCCC 40th Anniversary BOM Program was coordinated by Ann Gimbel and ran from Feb 2013 to April 2014. Any questions, please ask her. Contact info in GQCCC Directory

### California Poppy

Finished size 4 x 12", your block should measure 4 ½" x 12 ½". Technique is Paper Foundation piecing. *Paper foundation piecing hints for ease of removing paper. Crease the paper along seams lines, using a credit card or other thin piece of plastic. Stitch the seams using a small stitch. Cut the background pieces for # and G generously, so they'll cover the space (I cut mine about 3 ½" wide).*

This pattern is from Poppies in My Nine Patch, designed by guild member Valerie Sauban, and featured in the GQCCC's 2001 Opportunity Quilt "Poppy Odyssey".

Colors: 3 shades of orange: Light background, Striped gray-green fabric for leaf; Gray-Green fabric for stem.

To make a striped leaf, fold striped fabric in half with the right sides together. Cut 1" strips on a 60-degree angle. I cut my strips about 9" long so I would have plenty to paper piece. You will need a total of 4 strips (two matching sets).

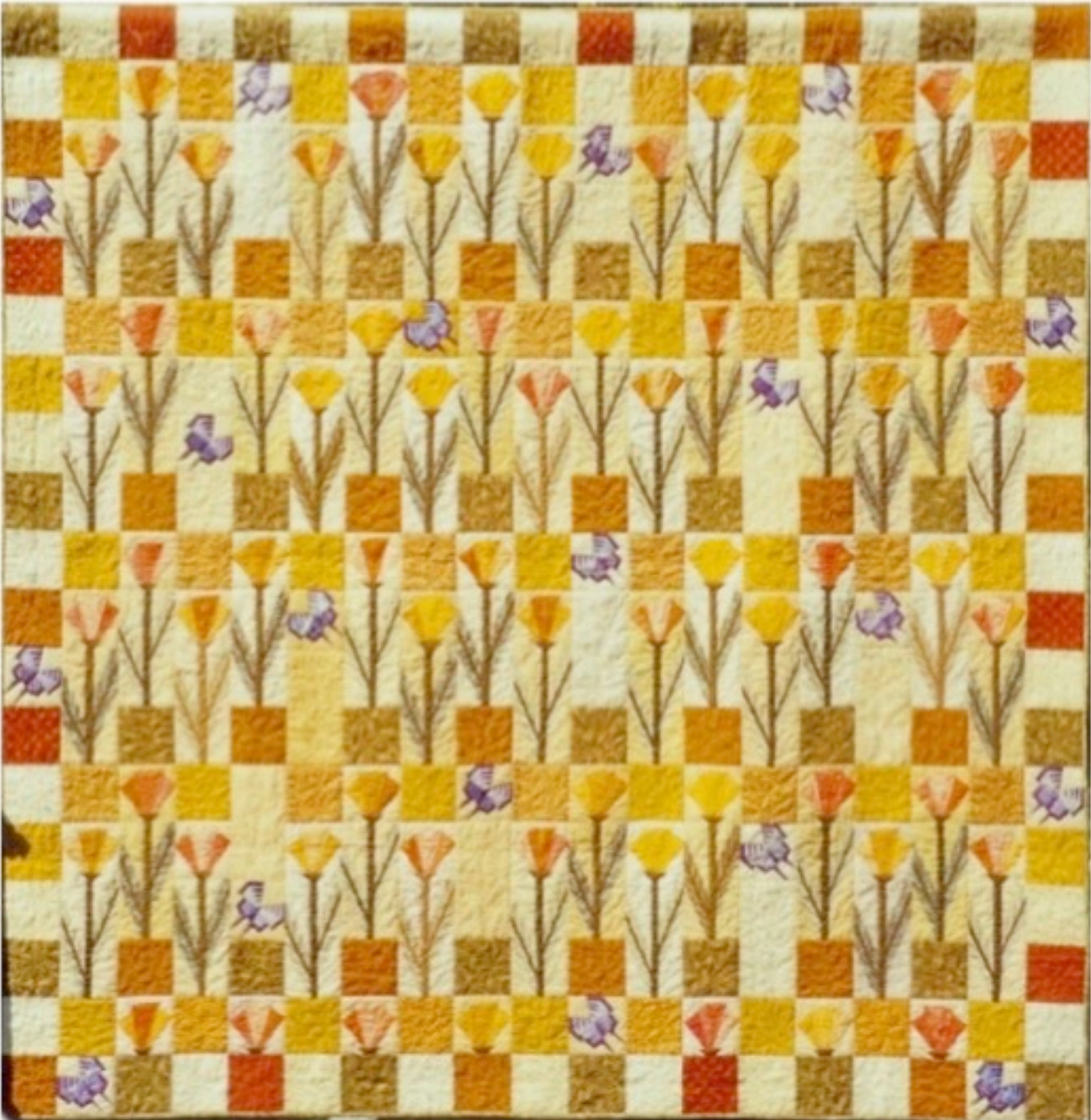
Sew a strip to either side of a ¾" x 9" wide strip of stem fabric to make a leaf. Make sure the stripes will go up when attached to the center vein and to the central stem. Completed leaf should measure 1 ¾" wide, including seam allowance. Repeat to make two leaves. OR, to simplify the leaf, just use one larger piece of leaf fabric and skip attaching striped fabric to a center "vein".

Stitch the individual units together in the numbered order. A2, B1 and C2 are shades of orange. Then sew the completed units together, A to B, and then A/B to C. Then sew A/B/C to section D. This completed section should measure 4 ½".

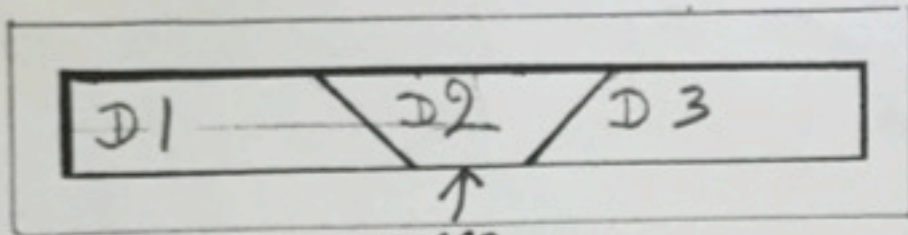
Now make the leaves, carefully placing the leaves so the stripes are reaching for the sun, so to speak! Sew completed leaf sections E and G to either side of an 8 ½ by 1" strip of stem fabric.



Poppy Odyssey, GQCCC 2001 Opportunity Quilt, designed by Valerie Sauban



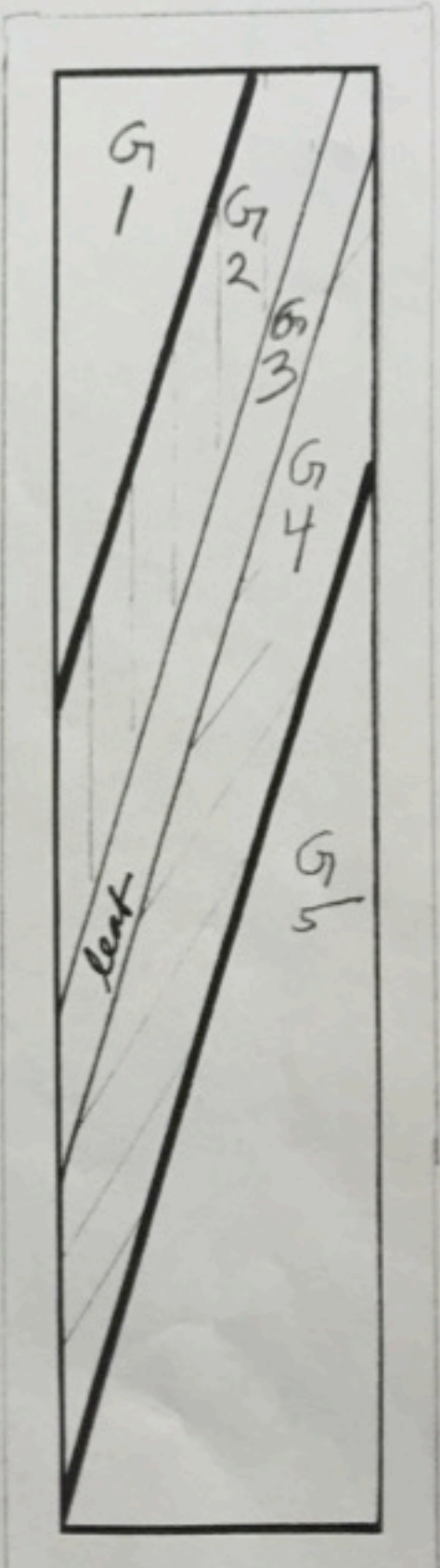
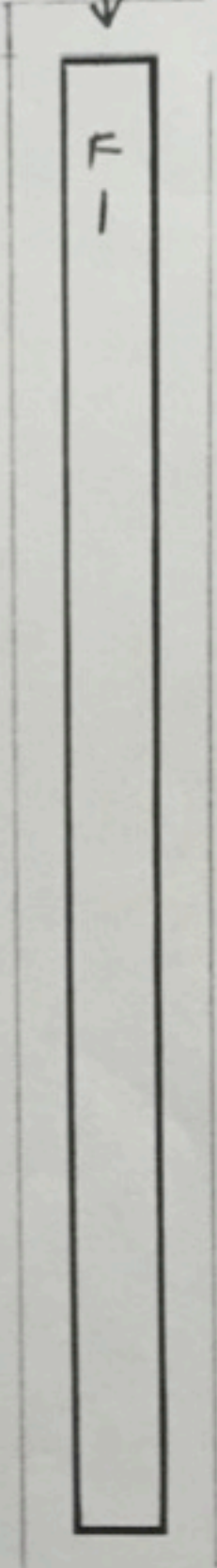
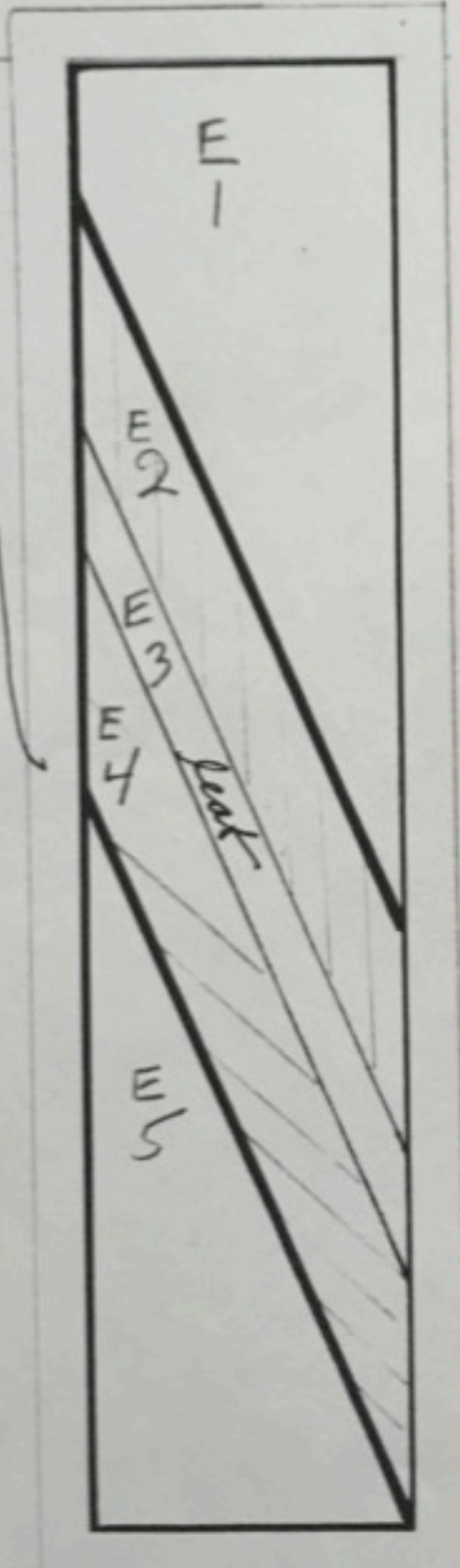


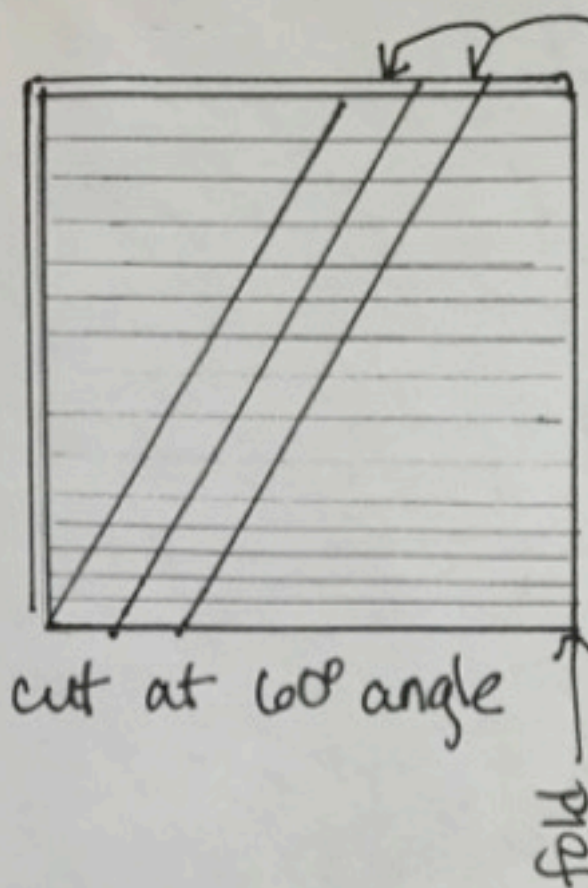


green

↓

of one can be  
of one piece  
green





two sets of 1" strips

cut at 60° angle

fold

